

GEORGE WASHINGTON CARVER

NORTH RIDGE

ENTRY MONUMENTATION



1288 WESTWOOD PLACE
AMES, IA 50010
(515)–231–6515

CALL IOWA ONE CALL TWO WORKING
DAYS PRIOR TO BEGINNING WORK

CALL: 811

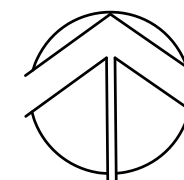
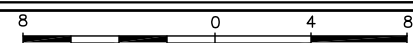
OR 1-800-292-8989

CAUTION

UTILITIES EXIST WITHIN CONSTRUCTION
LIMITS. CONTRACTOR IS RESPONSIBLE
FOR IDENTIFYING THEIR LOCATION PRIOR
TO CONSTRUCTION.

A PLAN
SCALE: 1/8" = 1'-0"

TYPICAL ENTRY MONUMENTS



DRAWN: GDG
PROJECT:
DATE: 07/28/2021
REVISED:

SHEET NO.

L1

NORTH RIDGE

ENTRY MONUMENTATION



1288 WESTWOOD PLACE
AMES, IA 50010
(515)-231-6515

CALL IOWA ONE CALL TWO WORKING
DAYS PRIOR TO BEGINNING WORK

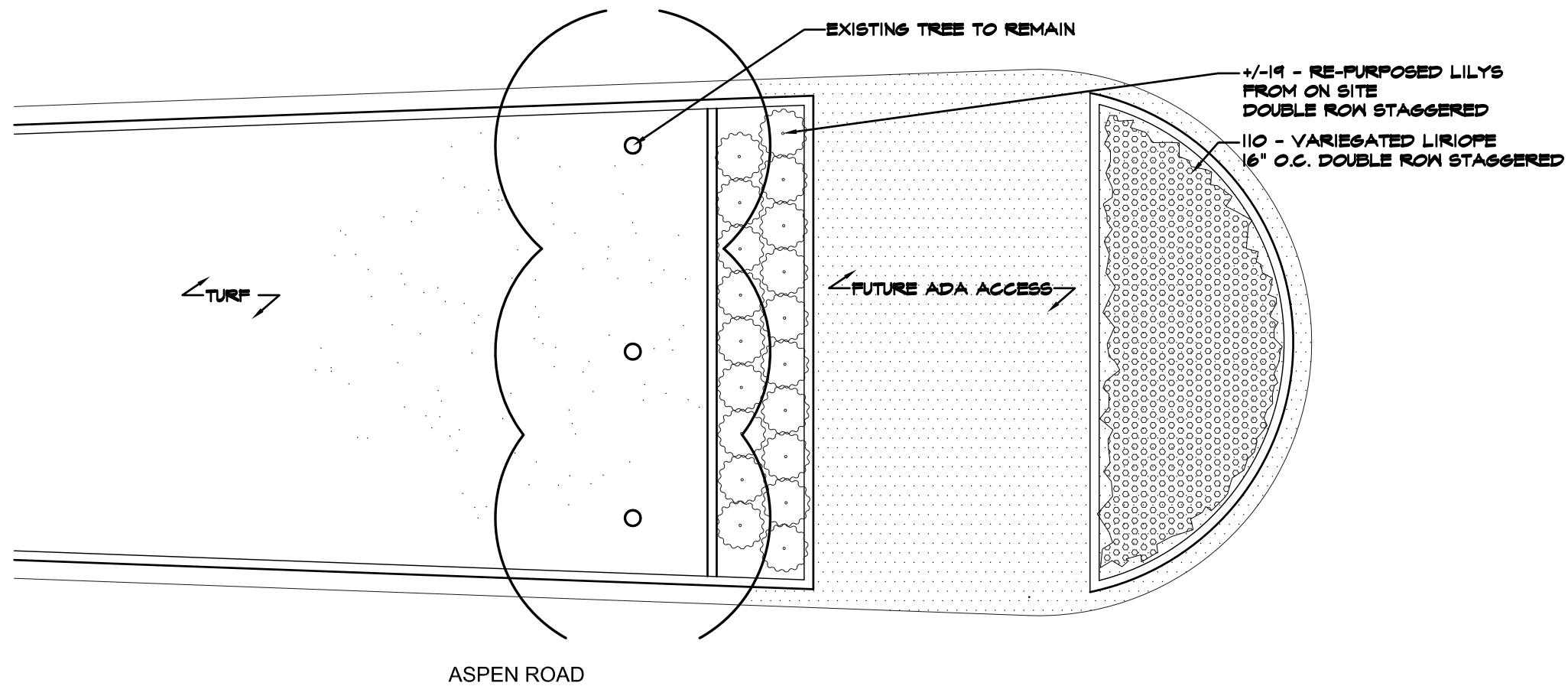
CALL: 811

OR 1-800-292-8989

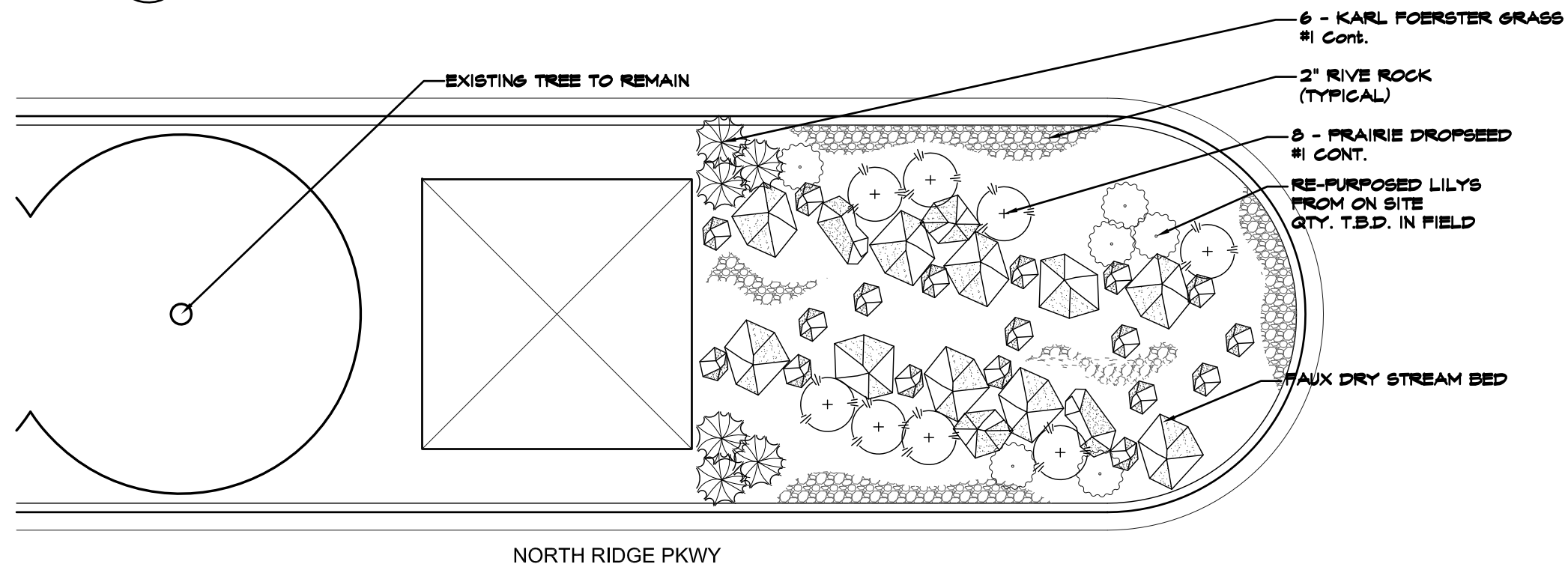
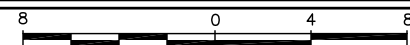
CAUTION

UTILITIES EXIST WITHIN CONSTRUCTION
LIMITS. CONTRACTOR IS RESPONSIBLE
FOR IDENTIFYING THEIR LOCATION PRIOR
TO CONSTRUCTION.

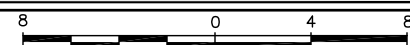
DRAWN: GDG	SHEET NO. L2
PROJECT:	
DATE: 07/28/2021	
REVISED:	



A PLAN
SCALE: 1/8" = 1'-0"
NORTH ENTRY ISLAND



B PLAN
SCALE: 1/8" = 1'-0"
SOUTH ENTRY ISLAND



GEORGE WASHINGTON CARVER

